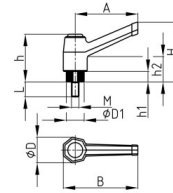


# Verstellbarer Klemmhebel mit verzinktem Gewindebolzen

## Adjustable clamping lever with zinc-plated thread bolt

Preise per 02.04.2025 - Änderungen jederzeit möglich  
Prices per 02.04.2025 - may change any time



## Serie KLM4B

Verstellbarer Klemmhebel mit verzinktem Gewindebolzen  
Adjustable clamping lever with zinc-plated thread bolt

Bestellnummer Order number	A	B	D	D1	H	h	h1	h2	L	M	bis 99 up to 99	ab 100 from 100	ab 500 from 500	ab 1.000 from 1,000	ab 2.500 from 2,500
* KLM4B 40 M5x10	40	50	17	12	42	33	7	15	10	M5	7,1158	5,0997	4,5898	4,1307	3,7177
* KLM4B 40 M5x20	40	50	17	12	42	33	7	15	20	M5	7,1158	5,0997	4,5898	4,1307	3,7177
* KLM4B 40 M5x30	40	50	17	12	42	33	7	15	30	M5	7,1158	5,0997	4,5898	4,1307	3,7177
* KLM4B 40 M6x15	40	50	17	12	42	33	7	15	15	M6	7,1158	5,0997	4,5898	4,1307	3,7177
* KLM4B 40 M6x20	40	50	17	12	42	33	7	15	20	M6	7,2050	5,1635	4,6473	4,1825	3,7643
* KLM4B 40 M6x25	40	50	17	12	42	33	7	15	25	M6	7,3708	5,2823	4,7542	4,2787	3,8509
* KLM4B 40 M6x30	40	50	17	12	42	33	7	15	30	M6	7,4985	5,3738	4,8366	4,3528	3,9175
* KLM4B 40 M8x15	40	50	17	12	42	33	7	15	15	M8	7,7085	5,5244	4,9720	4,4748	4,0273
* KLM4B 40 M8x30	40	50	17	12	42	33	7	15	30	M8	7,9698	5,7118	5,1405	4,6265	4,1638
* KLM4B 60 M6x15	60	70	22	15	42	37	8	14	15	M6	8,0456	5,7661	5,1895	4,6705	4,2034
* KLM4B 60 M6x20	60	70	22	15	42	37	8	14	20	M6	8,0456	5,7661	5,1895	4,6705	4,2034
* KLM4B 60 M6x25	60	70	22	15	42	37	8	14	25	M6	8,2249	5,8945	5,3050	4,7745	4,2970
* KLM4B 60 M6x30	60	70	22	15	42	37	8	14	30	M6	8,3392	5,9764	5,3787	4,8410	4,3568
* KLM4B 60 M6x40	60	70	22	15	42	37	8	14	40	M6	8,5934	6,1586	5,5427	4,9885	4,4895
* KLM4B 60 M6x50	60	70	22	15	42	37	8	14	50	M6	8,8934	6,3735	5,7362	5,1626	4,6464
* KLM4B 60 M8x15	60	70	22	15	42	37	8	14	15	M8	8,3392	5,9764	5,3787	4,8410	4,3568
* KLM4B 60 M8x20	60	70	22	15	42	37	8	14	20	M8	8,3392	5,9764	5,3787	4,8410	4,3568
* KLM4B 60 M8x30	60	70	22	15	42	37	8	14	30	M8	8,4348	6,0448	5,4405	4,8964	4,4067
* KLM4B 60 M8x40	60	70	22	15	42	37	8	14	40	M8	8,7340	6,2594	5,6334	5,0701	4,5631
* KLM4B 60 M8x50	60	70	22	15	42	37	8	14	50	M8	8,8490	6,3418	5,7076	5,1368	4,6232
* KLM4B 60 M8x60	60	70	22	15	42	37	8	14	60	M8	9,2311	6,6157	5,9541	5,3586	4,8228
* KLM4B 60 M10x20	60	70	22	15	42	37	8	14	20	M10	8,8934	6,3735	5,7362	5,1626	4,6464
* KLM4B 60 M10x30	60	70	22	15	42	37	8	14	30	M10	9,1103	6,5290	5,8762	5,2885	4,7597
* KLM4B 60 M10x40	60	70	22	15	42	37	8	14	40	M10	9,3196	6,6791	6,0113	5,4100	4,8692
* KLM4B 60 M10x50	60	70	22	15	42	37	8	14	50	M10	9,7474	6,9856	6,2870	5,6584	5,0925
* KLM4B 80 M10x20	80	95	27	19	59	49	9	20	20	M10	10,8423	7,7703	6,9934	6,2939	5,6645
* KLM4B 80 M10x30	80	95	27	19	59	49	9	20	30	M10	10,9701	7,8618	7,0758	6,3681	5,7313
* KLM4B 80 M10x40	80	95	27	19	59	49	9	20	40	M10	11,0914	7,9488	7,1540	6,4385	5,7947
* KLM4B 80 M10x50	80	95	27	19	59	49	9	20	50	M10	11,5179	8,2545	7,4290	6,6860	6,0174
* KLM4B 80 M10x60	80	95	27	19	59	49	9	20	60	M10	11,6770	8,3686	7,5317	6,7786	6,1007
* KLM4B 80 M12x20	80	95	27	19	59	49	9	20	20	M12	11,6007	8,3139	7,4824	6,7342	6,0607
* KLM4B 80 M12x30	80	95	27	19	59	49	9	20	30	M12	11,8549	8,4961	7,6464	6,8818	6,1936
* KLM4B 80 M12x40	80	95	27	19	59	49	9	20	40	M12	12,0656	8,6470	7,7822	7,0040	6,3036
* KLM4B 80 M12x50	80	95	27	19	59	49	9	20	50	M12	12,2056	8,7474	7,8727	7,0853	6,3767
* KLM4B 100 M12x30	100	117	38	25	85	60	12	20	30	M12	18,1301	12,9934	11,6939	10,5245	9,4721
* KLM4B 100 M12x40	100	117	38	25	85	60	12	20	40	M12	18,3402	13,1438	11,8294	10,6464	9,5818
* KLM4B 100 M12x50	100	117	38	25	85	60	12	20	50	M12	18,5444	13,2901	11,9612	10,7650	9,6885
* KLM4B 100 M14x30	100	117	38	25	85	60	12	20	30	M14	21,1497	15,1572	13,6415	12,2774	11,0496
* KLM4B 100 M14x40	100	117	38	25	85	60	12	20	40	M14	21,2799	15,2506	13,7255	12,3531	11,1177
* KLM4B 100 M14x50	100	117	38	25	85	60	12	20	50	M14	21,3706	15,3156	13,7840	12,4056	11,1651
* KLM4B 100 M16x30	100	117	38	25	85	60	12	20	30	M16	24,9905	17,9098	16,1188	14,5070	13,0561
* KLM4B 100 M16x40	100	117	38	25	85	60	12	20	40	M16	25,1940	18,0557	16,2501	14,6250	13,1625
* KLM4B 100 M16x50	100	117	38	25	85	60	12	20	50	M16	25,4111	18,2113	16,3901	14,7511	13,2760

Farben
Schwarz

Material
Grundkörper: glasfaserverstärktes Polyamid (PA-GF), Gewindebolzen: Stahl verzinkt, Druckknopf: Polyamid (PA)

Colours
Black

Material
Base body: glass fibre reinforced Nylon, Thread bolt: zinc-plated steel, Push button: Nylon

\* Keine Lagerware, bitte anfragen.

\* Not a stock item, please enquire.