

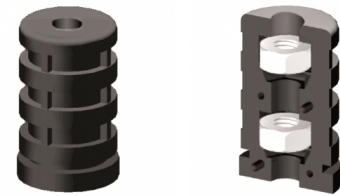
# Expanderverbinder mit zwei Stahlgewinde, 1 Dimension

## Expansion-connectors with two steel threads, 1 Dimension

Preise per 22.02.2025 - Änderungen jederzeit möglich  
Prices per 22.02.2025 - may change any time

### 1D1 für Rundrohre

Expanderverbinder mit zwei Stahlgewinde, 1 Dimension  
Expansion-connectors with two steel threads, 1 Dimension



Expanderverbinder - Schraubverbinder Expansion connectors

Bestellnummer Order number							bis 99 up to 99	ab 100 from 100	ab 500 from 500	ab 1.000 from 1,000	ab 2.500 from 2,500
* 1D1R16x0,75M6/2	16	0,75	SW10	12	32	43	1,0290	0,7374	0,6637	0,5974	0,5377
* 1D1R16x1M6/2	16	1	SW10	12	32	42	1,0290	0,7374	0,6637	0,5974	0,5377
* 1D1R19x1,5M6/2	19	1,5	SW10	12	32	39	1,0290	0,7374	0,6637	0,5974	0,5377
* 1D1R20x1M8/2	20	1	SW13	12	32	42	1,0430	0,7476	0,6728	0,6055	0,5451
* 1D1R20x1,5M6/2	20	1,5	SW10	12	32	42	1,1342	0,8128	0,7315	0,6584	0,5926
* 1D1R20x1,5M8/2	20	1,5	SW13	10	30	42	1,0430	0,7476	0,6728	0,6055	0,5451
* 1D1R20x2M8/2 SO	20	2	SW13	10	30	42	1,0430	0,7476	0,6728	0,6055	0,5451
* 1D1R22x1M6/2	22	1	SW10	12	32	42	1,2882	0,9232	0,8309	0,7477	0,6729
* 1D1R22x1M8/2	22	1	SW13	10	30	42	1,2251	0,8781	0,7903	0,7113	0,6402
* 1D1R22x1,5M6/2	22	1,5	SW10	12	32	42	1,2882	0,9232	0,8309	0,7477	0,6729
* 1D1R22x1,5M8/2	22	1,5	SW13	10	30	42	1,2251	0,8781	0,7903	0,7113	0,6402
* 1D1R25x1,5M6/2	25	1,5	SW10	12	32	42	1,4702	1,0536	0,9483	0,8535	0,7682
* 1D1R25x1,5M8/2	25	1,5	SW13	10	30	42	1,3442	0,9633	0,8670	0,7804	0,7022
* 1D1R25x1,5M8/2 O.LAM.	25	1,5	SW13	10	30	42	1,3442	0,9633	0,8670	0,7804	0,7022
* 1D1R28x1,5M6/2	28	1,5	SW10	12	32	41	1,8693	1,3396	1,2057	1,0850	0,9767
* 1D1R28x1,5M8/2	28	1,5	SW13	10	30	42	1,5750	1,1290	1,0160	0,9143	0,8230
* 1D1R28x2M8/2	28	2	SW13	10	30	42	1,5750	1,1290	1,0160	0,9143	0,8230
* 1D1R30x1,5M8/2	30	1,5	SW13	10	30	42	1,6524	1,1842	1,0657	0,9591	0,8633
* 1D1R30x1,5M10/2	30	1,5	SW17	10	30	42	1,7432	1,2493	1,1242	1,0119	0,9108
* 1D1R30x2M8/2	30	2	SW13	10	30	42	1,6524	1,1842	1,0657	0,9591	0,8633
* 1D1R30x2M10/2	30	2	SW17	10	30	42	1,7432	1,2493	1,1242	1,0119	0,9108
* 1D1R32x1,2M6/2	32	1,2	SW10	12	32	42	2,1701	1,5554	1,3999	1,2600	1,1339
* 1D1R32x1,5M10/2	32	1,5	SW17	10	30	42	1,8971	1,3599	1,2239	1,1014	0,9911
* 1D1R32x2M6/2	32	2	SW10	12	32	43	2,1701	1,5554	1,3999	1,2600	1,1339
* 1D1R32x2M10/2	32	2	SW17	10	30	42	1,8971	1,3599	1,2239	1,1014	0,9911
* 1D1R32x2,5M10/2	32	2,5	SW17	10	30	42	1,8971	1,3599	1,2239	1,1014	0,9911
* 1D1R34x2M10/2	34	2	SW17	10	30	42	2,2334	1,6006	1,4405	1,2964	1,1668
* 1D1R35x1,5M6/2	35	1,5	SW10	12	32	40	2,4782	1,7761	1,5986	1,4386	1,2947
* 1D1R35x1,5M10/2	35	1,5	SW17	10	29	39	2,0792	1,4902	1,3412	1,2070	1,0862
* 1D1R35x2M10/2	35	2	SW17	10	30	42	2,0792	1,4902	1,3412	1,2070	1,0862
* 1D1R40x2M10/2	40	2	SW17	10	30	42	2,9545	2,1173	1,9057	1,7150	1,5436
* 1D1R40x2,5M6/2	40	2,5	SW10	12	32	43	2,9545	2,1173	1,9057	1,7150	1,5436
* 1D1R42x2M10/2	42	2	SW17	10	30	43	2,9824	2,1374	1,9235	1,7314	1,5581
* 1D1R45x2M10/2	45	2	SW17	10	30	42	3,0595	2,1925	1,9732	1,7760	1,5985
* 1D1R50x1,5M10/2	50	1,5	SW17	10	30	40	2,7191	1,9487	1,7536	1,5784	1,4206
* 1D1R60x2M8/2	60	2	SW13	10	30	41	3,4444	2,4686	2,2217	1,9995	1,7997

Farben
Schwarz

Material
Polyamid

Colours
Black

Material
Nylon

\* Keine Lagerware, bitte anfragen.

Alle Maße in mm.

Druckfehler, Irrtümer und Änderungen vorbehalten.

Druckfehler und Irrtümer vorbehalten / aktuelle Version siehe  
[www.plasticmetall.com](http://www.plasticmetall.com)

Preise in EUR per Stück, netto.

\* Not a stock item, please enquire.

All measure specifications in mm.

Printing errors, mistakes and amendments reserved.

Misprint and mistakes excepted / current version see [www.plasticmetall.com](http://www.plasticmetall.com)

EUR prices per piece, netto.