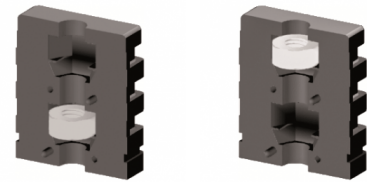


Expanderverbinder für Rechteckrohre

Expansion connectors for rectangular tubes

Preise per 22.02.2025 - Änderungen jederzeit möglich
Prices per 22.02.2025 - may change any time



1D1 für Rechteckrohre

Expanderverbinder mit einem Stahlgewinde, 1 Dimension
Expansion connectors with one steel thread, 1 Dimension

| Bestellnummer Order number | | | | | | | | bis 99 up to 99 | ab 100 from 100 | ab 500 from 500 | ab 1.000 from 1,000 | ab 2.500 from 2,500 |
|-------------------------------|----|----|-----|------|-----|----|------|--------------------|--------------------|--------------------|------------------------|------------------------|
| * 1D1V30x20x1,5M6/1 | 30 | 20 | 1,5 | SW10 | 12 | 32 | 41 | 1,5891 | 1,1388 | 1,0252 | 0,9223 | 0,8303 |
| * 1D1V30x20x1,5M8/1 | 30 | 20 | 1,5 | SW13 | 10 | 30 | 41,5 | 1,4702 | 1,0536 | 0,9483 | 0,8535 | 0,7682 |
| * 1D1V30x20x2M6/1 | 30 | 20 | 2 | SW10 | 12 | 32 | 46 | 1,5891 | 1,1388 | 1,0252 | 0,9223 | 0,8303 |
| * 1D1V35x25x1,5M10/1 | 35 | 25 | 1,5 | SW17 | 10 | 30 | 41 | 1,7153 | 1,2293 | 1,1065 | 0,9956 | 0,8959 |
| * 1D1V40x20x1,5M8/1 | 40 | 20 | 1,5 | SW13 | 12 | 32 | 42 | 1,4702 | 1,0536 | 0,9483 | 0,8535 | 0,7682 |
| * 1D1V40x25x2M10/1 | 40 | 25 | 2 | SW17 | 10 | 30 | 42 | 2,3245 | 1,6659 | 1,4991 | 1,3494 | 1,2143 |
| * 1D1V50x30x1,5M10/1 | 50 | 30 | 1,5 | SW17 | 8 | 25 | 38 | 2,9964 | 2,1474 | 1,9327 | 1,7395 | 1,5655 |
| * 1D1V50x25x2M10/1 | 50 | 25 | 2 | SW17 | 8,5 | 25 | 37 | 2,8142 | 2,0171 | 1,8153 | 1,6338 | 1,4704 |
| * 1D1V50x30x2M10/1 | 50 | 30 | 2 | SW17 | 8 | 25 | 38 | 2,9964 | 2,1474 | 1,9327 | 1,7395 | 1,5655 |
| * 1D1V60x30x2M10/1 | 60 | 30 | 2 | SW17 | 10 | 30 | 40 | 2,8425 | 2,0371 | 1,8332 | 1,6500 | 1,4849 |
| * 1D1V60x40x2M10/1 | 60 | 40 | 2 | SW17 | 9 | 26 | 39 | 3,8575 | 2,7645 | 2,4882 | 2,2392 | 2,0155 |

| Farben | Material |
|---------|----------|
| Schwarz | Polyamid |

| Colours | Material |
|---------|----------|
| Black | Nylon |

| Hinweise |
|--|
| Bestellbeispiele: 1D1/1 1 Stahlgewinde unten = 1D1 V20x20x1,5 M8/1 1D1/1H 1 Stahlgewinde oben = 1D1 V20x20x1,5 M8/1H |

| Hints |
|---|
| Order examples: 1D1/1 one steel thread below = 1D1 20x20x1,5 M8/1 1D1/1H one steel thread above = 1D1 20x20x1,5 M8/1H |

* Keine Lagerware, bitte anfragen.

Alle Maße in mm.

Druckfehler, Irrtümer und Änderungen vorbehalten.

Druckfehler und Irrtümer vorbehalten / aktuelle Version siehe
www.plasticmetall.com

Preise in EUR per Stück, netto.

* Not a stock item, please enquire.

All measure specifications in mm.

Printing errors, mistakes and amendments reserved.

Misprint and mistakes excepted / current version see www.plasticmetall.com

EUR prices per piece, netto.